

ISOSun

Solar Simulator

The **infinityPV** ISOSun is a stable solar simulator that provides homogenous light simulation over large area with easy implementation of filters, neutral density filters, cooling and wiring. The cost affordable solar simulator is optimized for longterm lifetime and stability studies of photovoltaic devices and various materials.

The ISOSun solar simulator enables reproducible testing of large PV devices up to 30 x 30 cm² according ISOS* protocols. Optional hardware provides simultaneous testing of up to 40 devices.

The large experimental compartment with ventilation fans enables good access with easy wire routing for external measurement devices. An integrated temperature sensor and photo diode provide instant data acquisition and make adjustments possible.



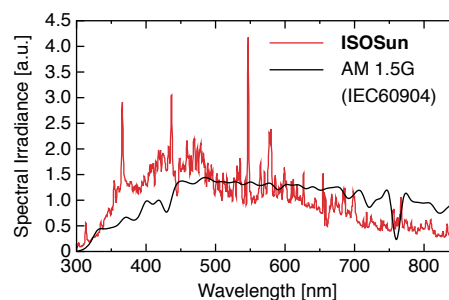
Features:

- Cost affordable large area solar simulator
- 30 x 30 cm² testing area
- Homogeneous light distribution
- Very light stable over time
- Optimized reflector design and filter
- Ideal for longterm lifetime & stability studies
 - Solar cells
 - Paints and coatings
 - Plastic materials
- Metal-halide light source (full light spectrum)
- Ergonomic design & easy wire routing
- Fast light bulb change
- Tray system for filters
- Optional software/hardware pack
 - I-V curve tracing for PV devices
 - Lifetime studies (according ISOS* protocols)
 - Test chambers
 - Multiplexer (up to 40 devices)
 - CalCell reference cell
- Fully CE approved

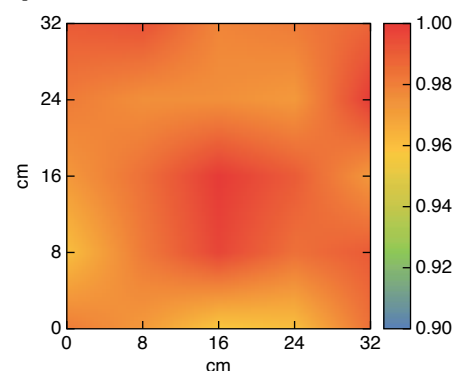
Specifications:

Illuminated area	32 x 32 cm ²
Typical power output	1000 W/m ² (1 sun), max 1.5 suns
Uniformity	< 5% (< 1% central area)
Temporal instability	± 10 W @ 1000 W/m ² (over 24 h)
Lamp type	metal-halide
Lamp power	1200 W
Power requirements	110 - 240 VAC / 1230 Watts
Size (H x W x D), cm	96 x 52 x 57
Weight (kg)	39
Included	Cabinet, digital thermometer (K-type), extra light bulb, adjustable elevator test surface, standard filter
Optional equipment	Software (incl. PC laptop), Keithley 2401 SMU, multiplexer, cooling table, bolometer, atmospheric test chambers, dark box, module test packs, filters, diffusers
Warranty	2 years

Spectral distribution (standard filter):



Light distribution:



ISOSun

Solar Simulator

Large experimental compartment / testing area



Ergonomic tray system for filters



Integrated photo diode and temperature sensor



Integrated ventilation fans



Easy parameter adjustment



Easy wire routing

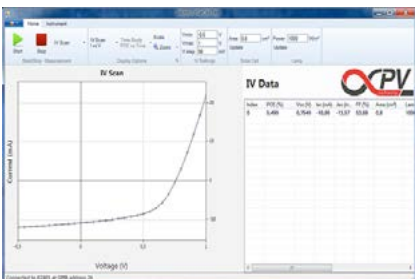


User-friendly light bulb access



Optional equipment

Software (I-V-curves, lifetime testing)



CalCell reference cell



Test chambers

