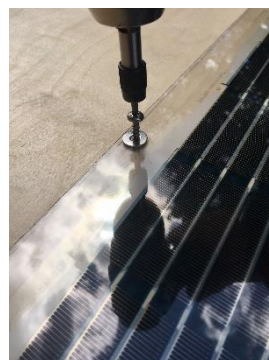


SOLO Panels

infinityPV ApS offers a series printed solar panels – for anyone with a need of flexible electrical energy. The SOLO series of panels range from 3-24 Watts and have output voltages of 60 V, 120 V, 180 V, 240 V or 480 V. We offer electronics for conversion and battery solutions for storage of harvested energy. With less than 2 mm in thickness this series of light weight panels comes in different sizes, shapes, and colours. Together with a battery for storage (from 8 Wh to 54 Wh) and electronics you get a complete solution that can be employed at your carport, bicycle shed, greenhouse, terrace or you can hang it on a south-facing wall. Place it beside your lounge in the sun, so you can always charge your mobile while enjoying the sun. Lay it or hang it wherever you want. The energy solution makes it easy to connect two SOLO panels and get more power. The choice of battery, electronics and battery pack depends on the typical operating conditions of your panel(s) as shown in the selection guide. Common to all the products from **infinityPV** is that your solar panel is produced in Denmark. The panels are uniquely environmentally friendly because of the low embedded energy in the solar foil. Help limit the CO2 emissions and pollution of the environment by using the sun's resources! >99.9% of the weight can be recycled by proper disposal in general plastic waste.



The SOLO panels are easy to mount by drilling mounting holes in the corners using screws, hooks, strings or whatever you see fit. You can even drill or cut your own holes to meet your needs as long as you do not drill holes in the solar cells or metal contacts.



Electrical connections are easily made by connecting wires to the rivets. Stainless steel screws with washers are recommended when connecting the eyelet to the rivet. Silicone can be added for a more durable seal around the contact.



There are different sizes, shapes and colours.

	Green	Purple	Width (cm) ¹	Length (cm) ²	Thickness (mm)	Voltage (volts)	Power (watts)
SOLO 3W60V	✓	✓	32	50	2	60	3
SOLO 3W60VL	✓		12	100	2	60	3
SOLO 6W60V	✓	✓	50	65	2	60	6
SOLO 6W120V	✓	✓	50	65	2	120	6
SOLO 6W120VL	✓	✓	32	95	2	120	6
SOLO 9W180VL	✓	✓	32	145	2	180	9
SOLO 12W120V	✓	✓	65	95	2	120	12
SOLO 12W240V	✓	✓	65	95	2	240	12
SOLO 12W240VL	✓	✓	32	190	2	240	12
SOLO 18W360V	✓	✓	65	145	2	120	18
SOLO 24W480V	✓	✓	65	190	2	480	24

^{1,2} Widths and lengths are typical values and may vary.

