

## LT-S9126

## Methylammonium iodide

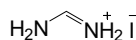
CAS No. : 14965-49-2  
 Grade : > 99.5% , recrystallized 4 times  
 Formula :  $\text{CH}_3\text{IN}$   
 M.W. : 158.97 g/mole  
 Reference : *ACS Nano*, 2014, 8 (2), pp 1674-1680



## LT-S9136

## Formamidinium iodide

CAS No. : 879643-71-7  
 Grade : > 99.5% , recrystallized 4 times  
 Formula :  $\text{CH}_2\text{IN}_2$   
 M.W. : 171.97 g/mole  
 Reference : *Energy Environ. Sci.*, 2014, 7, 982-988



## LT-S9137

## Methylammonium bromide

CAS No. : 6876-37-5  
 Grade : > 99.5% , recrystallized 4 times  
 Formula :  $\text{CH}_3\text{BrN}$   
 M.W. : 111.97 g/mole  
 Reference : *Energy Environ. Sci.*, 2014, 7, 982-988

LT-S9147 PbI<sub>2</sub>

## Lead(II) iodide

CAS No. : 10101-63-0  
 Grade : 99.999% (trace metals basis)  
 Formula :  $\text{PbI}_2$   
 M.W. : 461.01 g/mole  
 Reference : 1. *Science*, 345, 542(2014)  
 2. *ACS Nano*, 2014, 8 (2), pp 1674-1680

LT-S9148 PbCl<sub>2</sub>

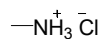
## Lead(II) chloride

CAS No. : 7758-95-4  
 Grade : 99.999% (trace metals basis)  
 Formula :  $\text{PbCl}_2$   
 M.W. : 278.11 g/mole  
 Reference : 1. *Science*, 345, 542(2014)  
 2. *ACS Nano*, 2014, 8 (2), pp 1674-1680

## LT-S9151 Methylammonium chloride

## Methylammonium chloride

CAS No. : 593-51-1  
 Grade : > 99.5% , recrystallized 4 times  
 Formula :  $\text{CH}_3\text{ClN}$   
 M.W. : 67.52 g/mole  
 Reference : *Chem. Mater.*, 2013, 25 (22), pp 4613-4618

LT-S9152 PbBr<sub>2</sub>

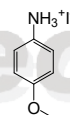
## Lead(II) bromide

CAS No. : 10031-22-8  
 Grade : 99.999% (trace metals basis)  
 Formula :  $\text{PbBr}_2$   
 M.W. : 367.01 g/mole

## LT-S9206

## 4-Methoxyphenylammonium iodide

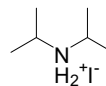
Grade : >99.5% , recrystallized 4 times  
 Formula :  $\text{C}_7\text{H}_{10}\text{INO}$   
 M.W. : 251.06 g/mole



## LT-S9207

## Diisopropylammonium iodide

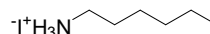
Grade : >99.5% , recrystallized 4 times  
 Formula :  $\text{C}_6\text{H}_{16}\text{IN}$   
 M.W. : 229.1 g/mole



## LT-S9208

## Hexylammonium iodide

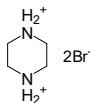
Grade : >99.5% , recrystallized 4 times  
 Formula :  $\text{C}_6\text{H}_{16}\text{IN}^+$   
 M.W. : 229.1 g/mole



### LT-S9217

Piperazine-1,4-diiium bromide

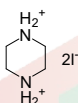
CAS No. : 59813-05-7  
 Grade : >99.5% , recrystallized 4 times  
 Formula :  $C_4H_{12}Br_2N_2$   
 M.W. : 247.96 g/mole



### LT-S9218

Piperazine-1,4-diiium iodide

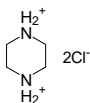
CAS No. : 58464-47-4  
 Grade : >99.5% , recrystallized 4 times  
 M.W. :  $C_4H_{12}I_2N_2$   
 UV : 341.96 g/mole



### LT-S9219

Piperazine-1,4-diiium chloride

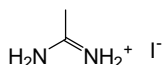
CAS No. : 142-64-3  
 Grade : >99.5% , recrystallized 4 times  
 Formula :  $C_4H_{12}Cl_2N_2$   
 M.W. : 159.06 g/mole



### LT-S9220

Acetamidinium iodide

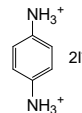
CAS No. : 1452099-14-7  
 Grade : >99.5% , recrystallized 4 times  
 Formula :  $C_2H_7IN_2$   
 M.W. : 185.99 g/mole



### LT-S9224

1,4-Benzene diammonium iodide

CAS No. : 116469-02-4  
 Grade : >99.5% , recrystallized 4 times  
 Formula :  $C_6H_{10}I_2N_2$   
 M.W. : 363.97 g/mole



### LT-S9225

Benzylammonium bromide

CAS No. : 37488-40-7  
 Grade : >99.5% , recrystallized 4 times  
 Formula :  $C_7H_9BrN$   
 M.W. : 188.06 g/mole



### LT-S9226

Benzylammonium iodide

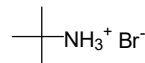
Grade : >99.5% , recrystallized 4 times  
 Formula :  $C_7H_9IN$   
 M.W. : 235.07 g/mole



### LT-S9227

t-Butylammonium bromide

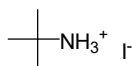
CAS No. : 60469-70-7  
 Grade : >99.5% , recrystallized 4 times  
 Formula :  $C_4H_{12}BrN$   
 M.W. : 154.05 g/mole



## LT-S9228

## t-Butylammonium iodide

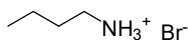
CAS No. : 39557-45-4  
 Grade : >99.5% , recrystallized 4 times  
 Formula :  $C_4H_{12}IN$   
 M.W. : 201.05 g/mole



## LT-S9229

## n-Butylammonium bromide

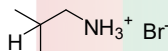
CAS No. : 15567-09-6  
 Grade : >99.5% , recrystallized 4 times  
 Formula :  $C_4H_{12}BrN$   
 M.W. : 154.05 g/mole



## LT-S9230

## iso-Butylammonium bromide

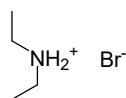
Grade :  $C_4H_{12}BrN$   
 Formula : >99.5% , recrystallized 4 times  
 M.W. : 154.05 g/mole



## LT-S9231

## Diethylammonium bromide

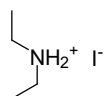
CAS No. : 6274-12-0  
 Grade : >99.5% , recrystallized 4 times  
 Formula :  $C_4H_{12}BrN$   
 M.W. : 154.05 g/mole



## LT-S9232

## Diethylammonium iodide

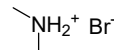
CAS No. : 19833-78-4  
 Grade : >99.5% , recrystallized 4 times  
 Formula :  $C_4H_{12}IN$   
 M.W. : 201.05 g/mole



## LT-S9233

## Dimethylammonium bromide

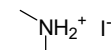
CAS No. : 6912-12-5  
 Grade : >99.5% , recrystallized 4 times  
 Formula :  $C_2H_8BrN$   
 M.W. : 126 g/mole



## LT-S9234

## Dimethylammonium iodide

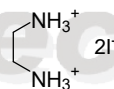
CAS No. : 51066-74-1  
 Grade : >99.5% , recrystallized 4 times  
 Formula :  $C_2H_8IN$   
 M.W. : 173 g/mole



## LT-S9235

## Ethane 1,2 diammonium iodide

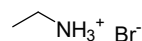
CAS No. : 5700-49-2  
 Grade : >99.5% , recrystallized 4 times  
 Formula :  $C_2H_{10}I_2N_2$   
 M.W. : 315.92 g/mole



## LT-S9236

## Ethylammonium bromide

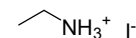
CAS No. : 593-55-5  
 Grade : >99.5% , recrystallized 4 times  
 Formula :  $C_2H_8BrN$   
 M.W. : 125.99 g/mole



## LT-S9237

## Ethylammonium iodide

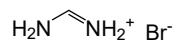
CAS No. : 506-58-1  
 Grade : >99.5% , recrystallized 4 times  
 Formula :  $C_2H_8IN$   
 M.W. : 173 g/mole



## LT-S9238

## Formamidinium bromide

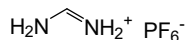
CAS No. : 146958-06-7  
 Grade : >99.5% , recrystallized 4 times  
 Formula :  $CH_5BrN_2$   
 M.W. : 124.97 g/mole



### LT-S9239

Formamidinium hexafluorophosphate

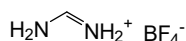
Grade : >99.5% , recrystallized 4 times  
 Formula :  $\text{CH}_5\text{F}_6\text{N}_2\text{P}$   
 M.W. : 190.03 g/mole



### LT-S9240

Formamidinium tetrafluoroborate

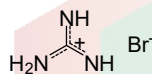
Grade : >99.5% , recrystallized 4 times  
 Formula :  $\text{CH}_5\text{BF}_4\text{N}_2$   
 M.W. : 131.87 g/mole



### LT-S9241

Guanidinium bromide

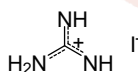
CAS No. : 19244-98-5  
 Grade : >99.5% , recrystallized 4 times  
 Formula :  $\text{CH}_6\text{BrN}_3$   
 M.W. : 139.98 g/mole



### LT-S9242

Guanidinium iodide

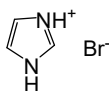
CAS No. : 19227-70-4  
 Grade : >99.5% , recrystallized 4 times  
 Formula :  $\text{CH}_6\text{IN}_3$   
 M.W. : 186.98 g/mole



### LT-S9243

Imidazolium bromide

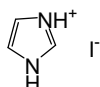
CAS No. : 101023-55-6  
 Grade : >99.5% , recrystallized 4 times  
 Formula :  $\text{C}_3\text{H}_5\text{BrN}_2$   
 M.W. : 148.99 g/mole



### LT-S9244

Imidazolium iodide

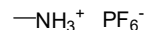
CAS No. : 68007-08-9  
 Grade : >99.5% , recrystallized 4 times  
 Formula :  $\text{C}_3\text{H}_5\text{IN}_2$   
 M.W. : 195.99 g/mole



### LT-S9245

Methylammonium hexafluorophosphate

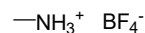
CAS No. : 28302-50-3  
 Grade : >99.5% , recrystallized 4 times  
 Formula :  $\text{CH}_6\text{PF}_6\text{N}$   
 M.W. : 177.03 g/mole



### LT-S9246

Methylammonium tetrafluoroborate

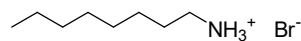
CAS No. : 42539-74-2  
 Grade : >99.5% , recrystallized 4 times  
 Formula :  $\text{CH}_6\text{BF}_4\text{N}$   
 M.W. : 118.87 g/mole



### LT-S9247

n-Octylammonium Bromide

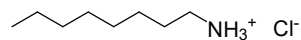
CAS No. : 14846-47-0  
 Grade : >99.5% , recrystallized 4 times  
 Formula :  $\text{C}_8\text{H}_{20}\text{BrN}$   
 M.W. : 210.16 g/mole



### LT-S9248

n-Octylammonium Chloride

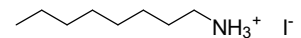
CAS No. : 142-95-0  
 Grade : >99.5% , recrystallized 4 times  
 Formula :  $\text{C}_8\text{H}_{20}\text{ClN}$   
 M.W. : 165.7 g/mole



### LT-S9249

n-Octylammonium Iodide

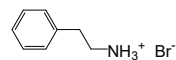
CAS No. : 60734-63-6  
 Grade : >99.5% , recrystallized 4 times  
 Formula :  $\text{C}_8\text{H}_{20}\text{IN}$   
 M.W. : 257.16 g/mole



### LT-S9250

Phenethylammonium bromide

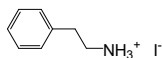
CAS No. : 53916-94-2  
 Grade : >99.5% , recrystallized 4 times  
 Formula :  $\text{C}_8\text{H}_{12}\text{BrN}$   
 M.W. : 202.09 g/mole



### LT-S9251

#### Phenethylammonium iodide

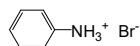
CAS No. : 151059-43-7  
 Grade : >99.5% , recrystallized 4 times  
 Formula :  $C_8H_{12}IN$   
 M.W. : 249.09 g/mole



### LT-S9252

#### Phenylammonium bromide

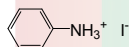
CAS No. : 542-11-0  
 Grade : >99.5% , recrystallized 4 times  
 Formula :  $C_6H_8BrN$   
 M.W. : 174.04 g/mole



### LT-S9253

#### Phenylammonium iodide

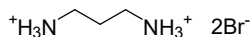
CAS No. : 45497-73-2  
 Grade : >99.5% , recrystallized 4 times  
 Formula :  $C_6H_8IN$   
 M.W. : 221.04 g/mole



### LT-S9254

#### Propane 1,3 diammonium bromide

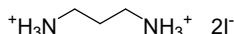
CAS No. : 18773-03-0  
 Grade : >99.5% , recrystallized 4 times  
 Formula :  $C_3H_{12}Br_2N_2$   
 M.W. : 235.95 g/mole



### LT-S9255

#### Propane 1,3 diammonium iodide

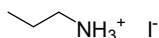
CAS No. : 120675-53-8  
 Grade : >99.5% , recrystallized 4 times  
 Formula :  $C_3H_{12}I_2N_2$   
 M.W. : 329.95 g/mole



### LT-S9256

#### n-Propylammonium iodide

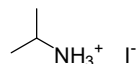
CAS No. : 14488-45-0  
 Grade : >99.5% , recrystallized 4 times  
 Formula :  $C_3H_{10}IN$   
 M.W. : 187.02 g/mole



### LT-S9257

#### iso-Propylammonium iodide

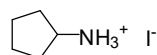
Grade : >99.5% , recrystallized 4 times  
 Formula :  $C_3H_{10}IN$   
 M.W. : 187.02 g/mole



### LT-S9258

#### Pyrrolidinium Iodide

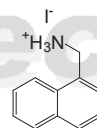
CAS No. : 45361-12-4  
 Grade :  $C_4H_{10}IN$   
 Formula : 199.03 g/mole  
 M.W. :



### LT-S9286

#### 1-Naphthylmethylamine iodide

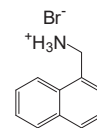
CAS No. : 256222-11-4  
 Grade : > 99%  
 Formula :  $C_{11}H_{12}IN$   
 M.W. : 285.12 g/mole



### LT-S9287

#### 1-Naphthylmethylamine Bromide

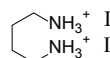
CAS No. : 217309-83-6  
 Grade : > 99%  
 Formula :  $C_{11}H_{12}BrN$   
 M.W. : 238.12 g/mole



### LT-S9300

#### Butane-1,4-diammonium iodide

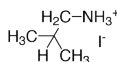
CAS No. : 916849-52-0  
 Grade : > 99%  
 Formula :  $C_4H_{14}I_2N_2$   
 M.W. : 343.98 g/mole



## LT-S9301

iso-Butylammonium iodide

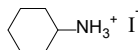
CAS No. : 205508-75-4  
 Grade : > 99%  
 Formula :  $C_4H_{12}IN$   
 M.W. : 201.05 g/mole



## LT-S9302

Cyclohexylammonium iodide

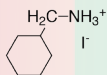
CAS No. : 45492-87-3  
 Grade : > 99%  
 Formula :  $C_6H_{14}IN$   
 M.W. : 227.09 g/mole



## LT-S9303

Cyclohexylmethylammonium iodide

Grade : > 99%  
 Formula :  $C_7H_{16}IN$   
 M.W. : 241.11 g/mole



## LT-S9304

1,4-Diazabicyclo[2,2,2]octane-1,4-dium iodide

CAS No. : 33322-06-4  
 Grade : > 99%  
 Formula :  $C_6H_{14}I_2N_2$   
 M.W. : 368 g/mole



## LT-S9305

N,N-Dimethyl-1,2-ethanediammonium iodide

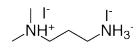
CAS No. : 244234-52-4  
 Grade : > 99%  
 Formula :  $C_4H_{14}I_2N_2$   
 M.W. : 343.98 g/mole



## LT-S9306

N,N-Dimethyl-1,3-propanediammonium iodide

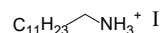
Grade : > 99%  
 Formula :  $C_5H_{16}I_2N_2$   
 M.W. : 358 g/mole



## LT-S9307

n-Dodecylammonium iodide

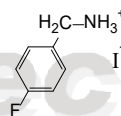
CAS No. : 34099-97-3  
 Grade : > 99%  
 Formula :  $C_{12}H_{28}IN$   
 M.W. : 313.26 g/mole



## LT-S9308

4-Fluoro-benzylammonium iodide

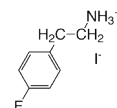
CAS No. : 2097121-30-5  
 Grade : > 99%  
 Formula :  $C_7H_9FIN$   
 M.W. : 253.06 g/mole



## LT-S9309

4-Fluoro-phenethylammonium iodide

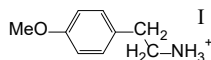
CAS No. : 1413269-55-2  
 Grade : > 99%  
 Formula :  $C_8H_{11}FIN$   
 M.W. : 267.08 g/mole



## LT-S9311

## 4-Methoxy-Phenethylammonium iodide

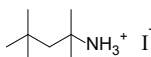
Grade : > 99%  
 Formula :  $C_9H_{14}INO$   
 M.W. : 279.12 g/mole



## LT-S9312

## tert-Octylammonium iodide

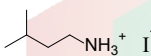
Grade : > 99%  
 Formula :  $C_8H_{20}IN$   
 M.W. : 257.16 g/mole



## LT-S9313

## iso-Pentylammonium iodide

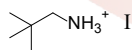
Grade : > 99%  
 Formula :  $C_5H_{14}IN$   
 M.W. : 215.06 g/mole



## LT-S9314

## neo-Pentylammonium iodide

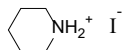
Grade : > 99%  
 Formula :  $C_5H_{14}IN$   
 M.W. : 215.08 g/mole



## LT-S9315

## Piperidinium iodide

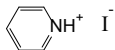
CAS No. : 21701-42-8  
 Grade : > 99%  
 Formula :  $C_5H_{12}IN$   
 M.W. : 213.06 g/mole



## LT-S9316

## Pyridinium iodide

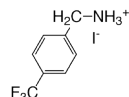
CAS No. : 18820-83-2  
 Grade : > 99%  
 Formula :  $C_5H_6IN$   
 M.W. : 207.01 g/mole



## LT-S9317

## 4-Trifluoromethyl-Benzylammonium iodide

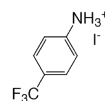
Grade : > 99%  
 Formula :  $C_8H_9F_3IN$   
 M.W. : 303.06 g/mole



## LT-S9318

## 4-Trifluoromethyl-Phenylammonium iodide

Grade : > 99%  
 Formula :  $C_7H_7IF_3N$   
 M.W. : 289.04 g/mole



## LT-S9319

## Acetamidinium bromide

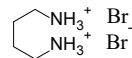
CAS No. : 1040352-82-6  
 Grade : > 99%  
 Formula :  $C_2H_7BrN_2$   
 M.W. : 138.99 g/mole



## LT-S9320

## Butane-1,4-diammonium bromide

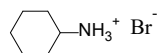
CAS No. : 18773-04-1  
 Grade : > 99%  
 Formula :  $C_4H_{14}Br_2N_2$   
 M.W. : 249.98 g/mole



## LT-S9321

## Cyclohexylammonium bromide

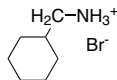
CAS No. : 26227-54-3  
 Grade : > 99%  
 Formula :  $C_6H_{14}BrN$   
 M.W. : 180.09 g/mole



### LT-S9322

Cyclohexylmethylammonium bromide

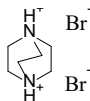
Grade : > 99%  
 Formula : C<sub>7</sub>H<sub>16</sub>BrN  
 M.W. : 194.11 g/mole



### LT-S9323

1,4-Diazabicyclo[2,2,2]octane 1,4-dium bromide

CAS No. : 54581-69-0  
 Grade : > 99%  
 Formula : C<sub>6</sub>H<sub>14</sub>Br<sub>2</sub>N<sub>2</sub>  
 M.W. : 274 g/mole



### LT-S9324

N,N-Dimethylethane-1,2-ethanediammonium bromide

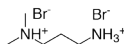
CAS No. : 1245570-04-0  
 Grade : > 99%  
 Formula : C<sub>4</sub>H<sub>14</sub>Br<sub>2</sub>N<sub>2</sub>  
 M.W. : 249.98 g/mole



### LT-S9325

N,N-Dimethyl-1,3-propanediammonium bromide

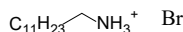
Grade : > 99%  
 Formula : C<sub>5</sub>H<sub>16</sub>Br<sub>2</sub>N<sub>2</sub>  
 M.W. : 264 g/mole



### LT-S9326

n-Dodecylammonium bromide

CAS No. : 26204-55-7  
 Grade : > 99%  
 Formula : C<sub>12</sub>H<sub>28</sub>BrN  
 M.W. : 266.26 g/mole



### LT-S9327

Ethane-1,2-diammonium bromide

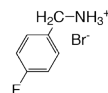
CAS No. : 624-59-9  
 Grade : > 99%  
 Formula : C<sub>2</sub>H<sub>10</sub>Br<sub>2</sub>N<sub>2</sub>  
 M.W. : 221.92 g/mole



### LT-S9328

4-Fluoro-benzylammonium bromide

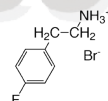
Grade : > 99%  
 Formula : C<sub>7</sub>H<sub>9</sub>FBrN  
 M.W. : 206.06 g/mole



### LT-S9329

4-Fluoro-phenethylammonium bromide

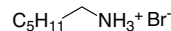
CAS No. : 1807536-06-6  
 Grade : > 99%  
 Formula : C<sub>8</sub>H<sub>11</sub>BrFN  
 M.W. : 220.08 g/mole



### LT-S9330

n-Hexylammonium bromide

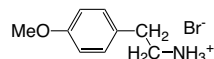
CAS No. : 7334-95-4  
 Grade : > 99%  
 Formula : C<sub>6</sub>H<sub>16</sub>BrN  
 M.W. : 182.1 g/mole



### LT-S9331

4-Methoxy-Phenethylammonium bromide

Grade : > 99%  
 Formula : C<sub>9</sub>H<sub>14</sub>BrNO  
 M.W. : 232.12 g/mole

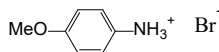




## LT-S9332

## 4-Methoxy-Phenylammonium bromide

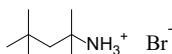
CAS No. : 116436-31-8  
 Grade : > 99%  
 Formula :  $C_9H_{11}BrNO$   
 M.W. : 232.12 g/mole



## LT-S9333

## tert-Octylammonium bromide

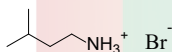
CAS No. : 1093859-61-0  
 Grade : > 99%  
 Formula :  $C_8H_{20}BrN$   
 M.W. : 210.16 g/mole



## LT-S9334

## iso-Pentylammonium bromide

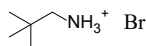
Grade : > 99%  
 Formula :  $C_5H_{14}BrN$   
 M.W. : 168.08 g/mole



## LT-S9335

## neo-Pentylammonium bromide

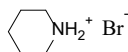
Grade : > 99%  
 Formula :  $C_5H_{14}BrN$   
 M.W. : 168.08 g/mole



## LT-S9336

## Piperidinium bromide

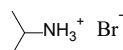
CAS No. : 14066-85-4  
 Grade : > 99%  
 Formula :  $C_5H_{12}BrN$   
 M.W. : 166.06 g/mole



## LT-S9337

## iso-Propylammonium bromide

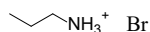
CAS No. : 29552-58-7  
 Grade : > 99%  
 Formula :  $C_3H_{10}BrN$   
 M.W. : 140.02 g/mole



## LT-S9338

## n-Propylammonium bromide

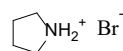
CAS No. : 4905-83-3  
 Grade : > 99%  
 Formula :  $C_3H_{10}BrN$   
 M.W. : 140.02 g/mole



## LT-S9339

## Pyrrolidinium bromide

CAS No. : 55810-80-5  
 Grade : > 99%  
 Formula :  $C_4H_{10}BrN$   
 M.W. : 152.03 g/mole



## LT-S9340

## Quinuclidin-1-ium bromide

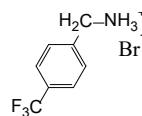
CAS No. : 60662-68-2  
 Grade : > 99%  
 Formula :  $C_7H_{14}BrN$   
 M.W. : 192.1 g/mole



## LT-S9341

## 4-Trifluoromethyl-Benzylammonium bromide

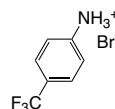
Grade : > 99%  
 Formula :  $C_8H_9F_3BrN$   
 M.W. : 256.06 g/mole



## LT-S9342

## 4-Trifluoromethyl-Phenylammonium bromide

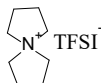
Grade : > 99%  
 Formula :  $C_7H_7BrF_3N$   
 M.W. : 242.03 g/mole



### LT-S9343

5-Azaspiro[4.4]non-5-iumbis(trifluoromethane)sulfonimide

CAS No. : 706759-44-6  
 Grade : > 99%  
 Formula :  $C_{10}H_{16}F_6N_2O_4S_2$   
 M.W. : 406.37 g/mole



### LT-S9344

1,4-Diazabicyclo[2.2.2]octane-1,4-dium chloride

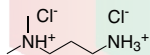
CAS No. : 49563-87-3  
 Grade : > 99%  
 Formula :  $C_6H_{14}Cl_2N_2$   
 M.W. : 185.09 g/mole



### LT-S9345

N,N-Dimethyl-1,3-propanediammonium chloride

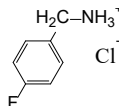
CAS No. : 52198-63-7  
 Grade : > 99%  
 Formula :  $C_5H_{16}Cl_2N_2$   
 M.W. : 175.1 g/mole



### LT-S9346

4-Fluoro-Benzylammonium chloride

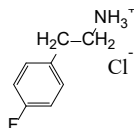
CAS No. : 659-41-6  
 Grade : > 99%  
 Formula :  $C_7H_9FCIN$   
 M.W. : 161.6 g/mole



### LT-S9347

4-Fluoro-Phenethylammonium chloride

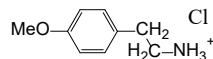
CAS No. : 459-19-8  
 Grade : > 99%  
 Formula :  $C_8H_{11}ClFN$   
 M.W. : 175.63 g/mole



### LT-S9348

4-Methoxy-Phenethylammonium chloride

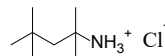
CAS No. : 645-58-9  
 Grade : > 99%  
 Formula :  $C_9H_{14}ClNO$   
 M.W. : 187.67 g/mole



### LT-S9349

tert-Octylammonium chloride

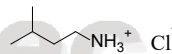
CAS No. : 58618-91-0  
 Grade : > 99%  
 Formula :  $C_8H_{20}ClN$   
 M.W. : 165.7 g/mole



### LT-S9350

iso-Pentylammonium chlor

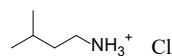
Grade : > 99%  
 Formula :  $C_5H_{14}ClN$   
 M.W. : 123.62 g/mole



### LT-S9351

neo-Pentylammonium chloride

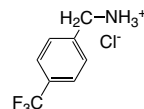
CAS No. : 15925-18-5  
 Grade : > 99%  
 Formula :  $C_5H_{14}ClN$   
 M.W. : 123.62 g/mole



### LT-S9352

4-Trifluoromethyl-Benzylammonium chloride

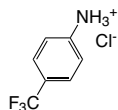
CAS No. : 3047-99-2  
 Grade : > 99%  
 Formula :  $C_8H_9F_3ClN$   
 M.W. : 211.61 g/mole



### LT-S9353

4-Trifluoromethyl-Phenylammonium chloride

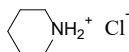
CAS No. : 90774-69-9  
 Grade : > 99%  
 Formula :  $C_7H_7ClF_3N$   
 M.W. : 197.59 g/mole



### LT-S9354

Piperidinium chloride

CAS No. : 6091-44-7  
 Grade : > 99%  
 Formula :  $C_5H_{12}ClN$   
 M.W. : 121.61 g/mole



### LT-S9355

Propane-1,3-diammonium chloride

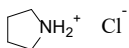
CAS No. : 10517-44-9  
 Grade : > 99%  
 Formula :  $C_3H_{12}Cl_2N_2$   
 M.W. : 147.05 g/mole



### LT-S9356

Pyrrrolidinium chloride

CAS No. : 25150-61-2  
 Grade : > 99%  
 Formula :  $C_4H_{10}ClN$   
 M.W. : 107.58 g/mole



### LT-S9357

Quinuclidin-1-ium chloride

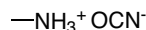
CAS No. : 39896-06-5  
 Grade : > 99%  
 Formula :  $C_7H_{14}ClN$   
 M.W. : 147.65 g/mole



### LT-S9358

Methylammonium cyate

CAS No. : 63405-91-4  
 Grade : > 99%  
 Formula :  $C_2H_6N_2O$   
 M.W. : 74.08 g/mole



### LT-S9359

5-Azapiro[4.4]non-5-ium tetrafluoroborate

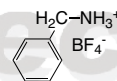
CAS No. : 129211-47-8  
 Grade : > 99%  
 Formula :  $C_8H_{16}BF_4N$   
 M.W. : 213.02 g/mole



### LT-S9360

Benzylammonium tetrafluoroborate

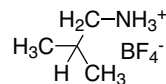
CAS No. : 41579-49-1  
 Grade : > 99%  
 Formula :  $C_7H_{10}BF_4N$   
 M.W. : 194.97 g/mole



### LT-S9361

iso-Butylammonium tetrafluoroborate

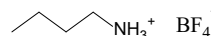
CAS No. : 71852-72-7  
 Grade : > 99%  
 Formula :  $C_4H_{12}BF_4N$   
 M.W. : 160.95 g/mole



### LT-S9362

n-Butylammonium tetrafluoroborate

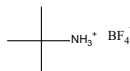
CAS No. : 71852-73-8  
 Grade : > 99%  
 Formula :  $C_4H_{12}BF_4N$   
 M.W. : 160.95 g/mole



### LT-S9363

t-Butylammonium tetrafluoroborate

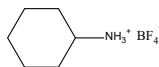
CAS No. : 24418-92-6  
 Grade : > 99%  
 Formula :  $C_4H_{12}BF_4N$   
 M.W. : 160.95 g/mole



### LT-S9364

Cyclohexylammonium tetrafluoroborate

CAS No. : 71893-43-1  
 Grade : > 99%  
 Formula :  $C_6H_{14}BF_4N$   
 M.W. : 186.99 g/mole



### LT-S9365

1,4-Diazabicyclo[2,2,2]octane-1,4-dium tetrafluoroborate

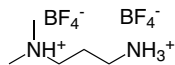
Grade : > 99%  
 Formula :  $C_6H_{14}B_2F_8N_2$   
 M.W. : 160.95 g/mole



### LT-S9366

N,N-Dimethyl-1,3-propanediammonium tetrafluoroborate

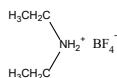
Grade : > 99%  
 Formula :  $C_5H_{16}B_2F_8N_2$   
 M.W. : 277.8 g/mole



### LT-S9367

Diethylammonium tetrafluoroborate

CAS No. : 17085-33-5  
 Grade : > 99%  
 Formula :  $C_4H_{12}BF_4N$   
 M.W. : 160.95 g/mole



### LT-S9368

Dimethylammonium tetrafluoroborate

CAS No. : 16970-97-1  
 Grade : > 99%  
 Formula :  $C_2H_8BF_4N$   
 M.W. : 132.9 g/mole



### LT-S9369

Dimethylammonium tetrafluoroborate

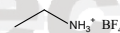
Grade : > 99%  
 Formula :  $C_2H_{10}B_2F_8N_2$   
 M.W. : 235.72 g/mole



### LT-S9370

Ethylammonium tetrafluoroborate

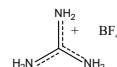
CAS No. : 12070-78-9  
 Grade : > 99%  
 Formula :  $C_2H_8BF_4N$   
 M.W. : 132.9 g/mole



### LT-S9371

Guanidinium tetrafluoroborate

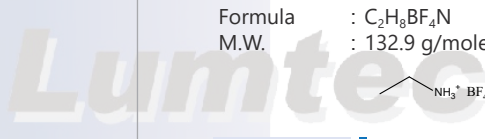
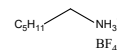
CAS No. : 36595-00-3  
 Grade : > 99%  
 Formula :  $CH_6BF_4N_3$   
 M.W. : 146.88 g/mole



### LT-S9372

n-Hexylammonium tetrafluoroborate

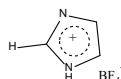
CAS No. : 41579-47-9  
 Grade : > 99%  
 Formula :  $C_6H_{16}BF_4N$   
 M.W. : 378.01 g/mole



## LT-S9373

## Imidazolium tetrafluoroborate

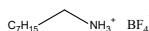
CAS No. : 112725-76-5  
 Grade : > 99%  
 Formula :  $C_3H_5BF_4N_2$   
 M.W. : 155.89 g/mole



## LT-S9374

## n-Octylammonium tetrafluoroborate

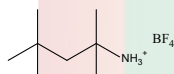
CAS No. : 790269-39-5  
 Grade : > 99%  
 Formula :  $C_8H_{20}BF_4N$   
 M.W. : 217.06 g/mole



## LT-S9375

## tert-Octylammonium tetrafluoroborate

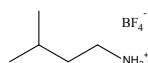
Grade : > 99%  
 Formula :  $C_8H_{20}BF_4N$   
 M.W. : 217.06 g/mole



## LT-S9376

## iso-Pentylammonium tetrafluoroborate

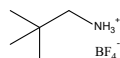
CAS No. : 150178-33-9  
 Grade : > 99%  
 Formula :  $C_5H_{14}BF_4N$   
 M.W. : 174.97 g/mole



## LT-S9377

## neo-Pentylammonium tetrafluoroborate

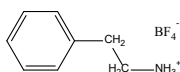
Grade : > 99%  
 Formula :  $C_5H_{14}BF_4N$   
 M.W. : 174.98 g/mole



## LT-S9378

## Phenethylammonium tetrafluoroborate

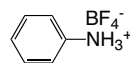
Grade : > 99%  
 Formula :  $C_8H_{12}BF_4N$   
 M.W. : 208.99 g/mole



## LT-S9379

## Phenylammonium tetrafluoroborate

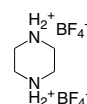
CAS No. : 3796-29-0  
 Grade : > 99%  
 Formula :  $C_6H_8BF_4N$   
 M.W. : 180.94 g/mole



## LT-S9380

## Piperazine-1,4-dium tetrafluoroborate

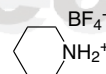
Grade : > 99%  
 Formula :  $C_4H_{12}B_2F_8N_2$   
 M.W. : 261.76 g/mole



## LT-S9381

## Piperidinium tetrafluoroborate

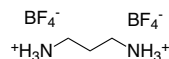
CAS No. : 20935-77-7  
 Grade : > 99%  
 Formula :  $C_5H_{12}BF_4N$   
 M.W. : 172.96 g/mole



## LT-S9382

## Propane-1,3-diammonium tetrafluoroborate

Grade : > 99%  
 Formula :  $C_3H_{12}B_2F_8N_2$   
 M.W. : 249.75 g/mole



## LT-S9383

## iso-Propylammonium tetrafluoroborate

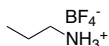
CAS No. : 71852-74-9  
 Grade : > 99%  
 Formula :  $C_3H_{10}BF_4N$   
 M.W. : 146.92 g/mole



### LT-S9384

n-Propylammonium tetrafluoroborate

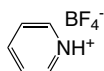
CAS No. : 71852-75-0  
 Grade : > 99%  
 Formula :  $C_3H_{10}BF_4N$   
 M.W. : 146.92 g/mole



### LT-S9385

Pyridinium tetrafluoroborate

CAS No. : 505-07-7  
 Grade : > 99%  
 Formula :  $C_5H_6BF_4N$   
 M.W. : 166.91 g/mole



### LT-S9386

Pyrrolidinium tetrafluoroborate

CAS No. : 95647-26-0  
 Grade : > 99%  
 Formula :  $C_4H_{10}BF_4N$   
 M.W. : 158.93 g/mole



### LT-S9387

Quinuclidin-1-ium tetrafluoroborate

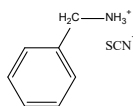
CAS No. : 936025-25-1  
 Grade : > 99%  
 Formula :  $C_7H_{14}BF_4N$   
 M.W. : 199 g/mole



### LT-S9388

Benzylammonium thiocyanate

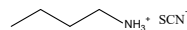
CAS No. : 51571-89-2  
 Grade : > 99%  
 Formula :  $C_8H_{10}N_2S$   
 M.W. : 166.24 g/mole



### LT-S9389

n-Butylammonium thiocyanate

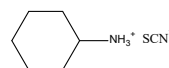
CAS No. : 25162-84-9  
 Grade : > 99%  
 Formula :  $C_5H_{12}N_2S$   
 M.W. : 132.23 g/mole



### LT-S9390

n-Butylammonium thiocyanate

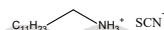
CAS No. : 96943-17-8  
 Grade : > 99%  
 Formula :  $C_7H_{14}N_2S$   
 M.W. : 158.26 g/mole



### LT-S9391

n-Dodecylammonium thiocyanate

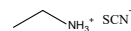
CAS No. : 22031-31-8  
 Grade : > 99%  
 Formula :  $C_{13}H_{28}N_2S$   
 M.W. : 244.44 g/mole



### LT-S9392

Ethylammonium thiocyanate

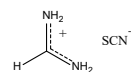
CAS No. : 25153-19-9  
 Grade : > 99%  
 Formula :  $C_3H_8N_2S$   
 M.W. : 104.17 g/mole



### LT-S9393

Formamidinium thiocyanate

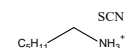
CAS No. : 1821033-48-0  
 Grade : > 99%  
 Formula :  $CH_5N_3S$   
 M.W. : 103.15 g/mole



### LT-S9394

n-Hexylammonium thiocyanate

CAS No. : 25162-85-0  
 Grade : > 99%  
 Formula :  $C_7H_{16}N_2S$   
 M.W. : 160.28 g/mole



## LT-S9395

## Methylammonium thiocyanate

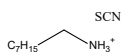
CAS No. : 61540-63-4  
 Grade : > 99%  
 Formula :  $C_2H_5N_2S$   
 M.W. : 90.15 g/mole



## LT-S9396

## n-Octylammonium thiocyanate

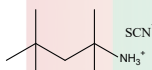
CAS No. : 25162-86-1  
 Grade : > 99%  
 Formula :  $C_9H_{20}N_2S$   
 M.W. : 188.33 g/mole



## LT-S9397

## tert-Octylammonium thiocyanate

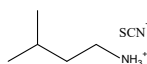
CAS No. : 41115-58-6  
 Grade : > 99%  
 Formula :  $C_9H_{20}N_2S$   
 M.W. : 188.33 g/mole



## LT-S9398

## iso-Pentylammonium thiocyanate

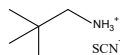
Grade : > 99%  
 Formula :  $C_6H_{14}N_2S$   
 M.W. : 146.25 g/mole



## LT-S9399

## neo-Pentylammonium thiocyanate

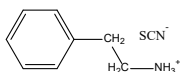
CAS No. : 61540-71-4  
 Grade : > 99%  
 Formula :  $C_6H_{14}N_2S$   
 M.W. : 146.25 g/mole



## LT-S9400

## Phenethylammonium thiocyanate

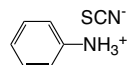
Grade : > 99%  
 Formula :  $C_9H_{12}N_2S$   
 M.W. : 180.27 g/mole



## LT-S9401

## Phenylammonium thiocyanate

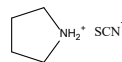
CAS No. : 27248-14-2  
 Grade : > 99%  
 Formula :  $C_7H_8N_2S$   
 M.W. : 152.22 g/mole



## LT-S9402

## Pyrrolidinium thiocyanate

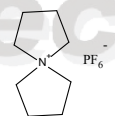
CAS No. : 217309-80-3  
 Grade : > 99%  
 Formula :  $C_5H_{10}N_2S$   
 M.W. : 130.21 g/mole



## LT-S9403

## 5-Azaspiro[4.4]non-5-ium hexafluorophosphate

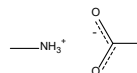
CAS No. : 129211-50-3  
 Grade : > 99%  
 Formula :  $C_8H_{16}F_6NP$   
 M.W. : 271.18 g/mole



## LT-S9404

## Methylammonium acetate

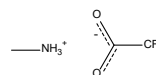
CAS No. : 6998-30-7  
 Grade : > 99%  
 Formula :  $C_3H_{10}NO_2$   
 M.W. : 92.12 g/mole



## LT-S9405

## Methylammonium trifluoroacetate

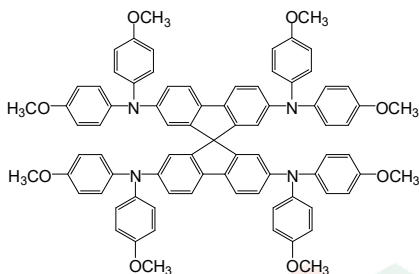
CAS No. : 107326-29-4  
 Grade : > 99%  
 Formula :  $C_3H_7F_3NO_2$   
 M.W. : 146.09 g/mole



### LT-S922 Spiro-MeOTAD

2,2',7,7'-Tetrakis(*N,N*-di-*p*-methoxyphenylamino)-9,9'-spirobifluorene

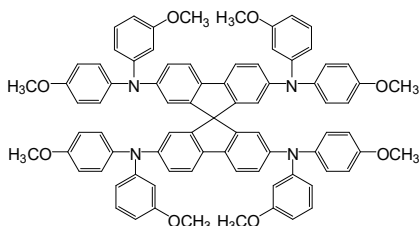
CAS No. : 207739-72-8  
 Grade : > 99.5% (HPLC)  
 Formula :  $C_{81}H_{68}N_4O_8$   
 M.W. : 1225.43 g/mole  
 UV : 306, 385 nm (in  $CH_2Cl_2$ )  
 PL : 429 nm (in  $CH_2Cl_2$ )  
 TGA : > 360 °C (0.5% weight loss)  
 Reference : 1. *MRS. BULLETIN*, 30, 2005, p23  
 2. *Appl. Phys. Lett.* 100, 173512 (2012)



### LT-S9145 p,m-Spiro-MeOTAD

$N^2,N^2,N^7,N^7$ -Tetrakis(3-methoxyphenyl)- $N^2,N^2,N^7,N^7$ -tetrakis(4-methoxyphenyl)-9,9'-spirobifluorene]-2,2',7,7'-tetraamine

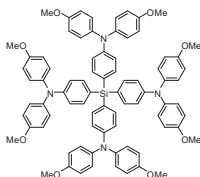
CAS No. : 1573202-44-4  
 Grade : > 99% (HPLC)  
 Formula :  $C_{81}H_{68}N_4O_8$   
 M.W. : 1225.43 g/mole  
 UV : 308, 378 nm (in  $CH_2Cl_2$ )  
 PL : 414 nm (in  $CH_2Cl_2$ )  
 TGA : > 280 °C (0.5% weight loss)  
 Reference : *J. Am. Chem. Soc.* 2014, 136, 7837-7840



### LT-S9290 Si-OMeTPA

4,4',4''',4''''-silanetetrayltetrakis(*N,N*-bis(4-methoxyphenyl)aniline)

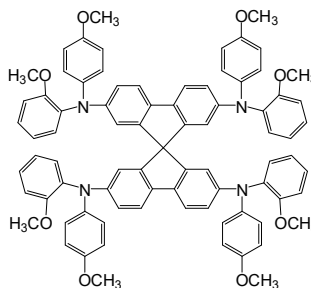
Grade : > 99% (HPLC)  
 Formula :  $C_{80}H_{72}N_4O_8Si$   
 M.W. : 1245.54 g/mole  
 HOMO : -5.39 eV  
 LUMO : -1.96 eV



### LT-S9146 p,o-Spiro-MeOTAD

$N^2,N^2,N^7,N^7$ -Tetrakis(2-methoxyphenyl)- $N^2,N^2,N^7,N^7$ -tetrakis(4-methoxyphenyl)-9,9'-spirobifluorene]-2,2',7,7'-tetraamine

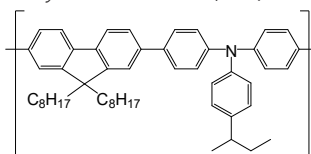
CAS No. : 1628961-22-7  
 Grade : > 98.5% (HPLC)  
 Formula :  $C_{81}H_{68}N_4O_8$   
 M.W. : 1225.43 g/mole  
 UV : 316, 375 nm (in  $CH_2Cl_2$ )  
 PL : 418 nm (in  $CH_2Cl_2$ )  
 TGA : > 280 °C (0.5% weight loss)  
 Reference : *J. Am. Chem. Soc.* 2014, 136, 7837-7840



### LT-N148 TFB

Poly[(9,9-dioctylfluorenyl)-2,7-diyl]-*co*-(4,4'-(*N*-(4-*sec*-butylphenyl) diphenylamine)]

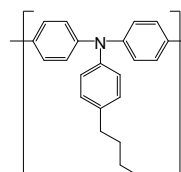
CAS No. : 220797-16-0  
 Grade :  $M_w > 30,000$  (GPC)  
 Formula :  $(C_{51}H_{51}N)_n$   
 UV : 389 nm (in  $CH_2Cl_2$ )  
 PL : 443 nm (in  $CH_2Cl_2$ )  
 Solubility : Soluble in  $CH_2Cl_2$ , Toluene,  $CHCl_3$   
 Reference : *Synthetic Metals* 160 (2010) 2393-2396



### LT-N149 Poly-TPD

Poly[*N,N'*-bis(4-butylphenyl)-*N,N'*-bis(phenyl)-benzidine]

CAS No. : 472960-35-3  
 Grade :  $M_w 20,000 \sim 100,000$  (GPC)  
 Formula :  $(C_{22}H_{21}N)_n$   
 UV : 371, 388 nm (in  $CH_2Cl_2$ )  
 PL : 424 nm (in  $CH_2Cl_2$ )  
 Solubility : Soluble in  $CHCl_3$ , Chlorobenzene  
 Reference : *Nature Photonics* 8, 128-132 (2014)



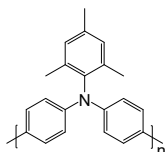


### LT-N168 | PTAA

Poly[bis(4-phenyl)(2,4,6-trimethylphenyl)amine]

CAS No. : 1333317-99-9  
 Grade :  $M_w > 10,000$  (GPC)  
 Formula :  $(C_{21}H_{19}N)_n$   
 UV : 371, 388 nm (in  $CH_2Cl_2$ )  
 PL : 424 nm (in  $CH_2Cl_2$ )  
 Solubility : Soluble in  $CHCl_3$ , Chlorobenzene, Dichlorobenzene

Reference : *Nature Photonics* 7, 486-491 (2013)

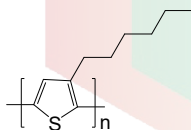


### LT-S909 | P3HT

Poly(3-hexylthiophene-2,5-diyl)

CAS No. : 104934-50-1  
 Grade :  $M_w > 45,000$  (GPC)  
 Regioregular Electronic Grade > 93%  
 Formula :  $(C_{10}H_{14}S)_n$   
 UV : 445 nm (in THF)  
 PL : 564 nm (in THF)  
 Solubility : Soluble in  $CHCl_3$ , Chlorobenzene, Dichlorobenzene

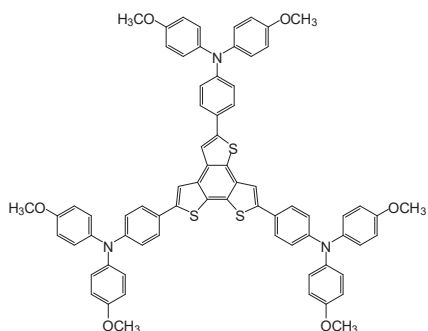
Reference : *Journal of Power Sources*, 251, (2014), 152-156



### LT-S9276 | BTT-4

2,5,8-Tris(4-(bis(4-methoxyphenyl)amino)phenyl)benzotrithiophene

CAS No. : 1908506-93-3  
 Formula :  $C_{72}H_{57}N_3O_6S_3$   
 M.W. : 1156.43 g/mole



### LT-PS001 | PEDOT:PSS

Poly(3,4-ethylenedioxythiophene)-poly(styrenesulfonate)

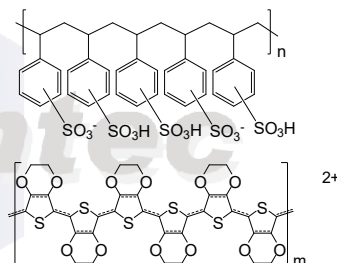
Specification  
 Description : Aqueous dispersion, blue liquid.  
 Sodium : Max. 400 ppm  
 Sulfate : Max. 40 ppm  
 Solid content : 1.3 - 1.7 wt%  
 PSD  $d_{50}$  : 80 nm  
 PSD  $d_{90}$  : 100 nm  
 Resistivity : 500-5000  $\Omega cm$   
 Viscosity : 5-12 mPas

Technical Data (guide values, not a specification)

Form : liquid  
 Odour : odourless  
 Colour : dark blue  
 PEDOT:PSS ratio : 1:6 (by weight)  
 PEDOT work function : approx 5.2 eV  
 pH : 1.2 - 2.2 at 20°C  
 Boiling Point : approx 100°C

Storage : The product is sensitive to frost and should therefore not be stored at temperatures below 5°C.

Avoid freezing!

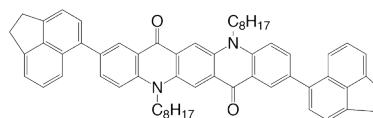


### LT-S9484 | ACE-QA-ACE

2,9-bis(1,2-dihydroacnaphthylen-5-yl)-5,12-dioctyl-5,12-dihydroquinolino [2,3-b]acridine-7,14-dione

Grade : >99 % (HPLC)  
 Formula :  $C_{60}H_{60}N_2O_2$   
 M.W. : 841.13 g/mole  
 UV : 301 nm (in  $CHCl_3$ )  
 PL : 558 nm  
 HOMO : -5.59 eV  
 LUMO : -3.47 eV

Reference : *J. Mater. Chem. A*, 2019, 7, 5315-5323



### LT-S9127 | FK209 Co(III) TFSI Salt

Tris(2-(1*H*-pyrazol-1-yl)-4-*tert*-butylpyridine)-cobalt(III) tris(bis(trifluoromethylsulfonyl)imide)

CAS No. : 1447938-61-5

Grade : > 99% (NMR)

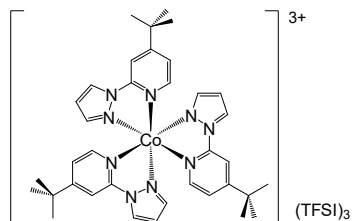
Formula :  $C_{42}H_{45}CoF_{18}N_{12}O_{12}S_6$

M.W. : 1503.18 g/mole

UV : 227, 287 nm (in Acetonitrile)

Reference : 1. *J. Mater. Chem. A*, 2013, 1, 11842-11847

2. *J. Am. Chem. Soc.*, 2013, 135 (51), pp 19087-19090



### LT-S9135 | FK102 Co(III) PF<sub>6</sub> Salt

Tris(1-(pyridin-2-yl)-1*H*-pyrazol)cobalt(III) tris(hexafluorophosphate)

CAS No. : 1346416-70-3

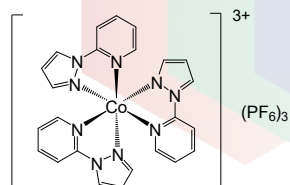
Grade : > 99% (NMR)

Formula :  $C_{24}H_{21}CoF_{18}N_9P_3$

M.W. : 929.31 g/mole

UV : 215, 292 nm (in Acetonitrile)

Reference : *J. Am. Chem. Soc.* 2011, 133, 18042-18045



### LT-S9437 | 2,4-spiro-OMeTAD

*N*2,*N*2',*N*7,*N*7'-tetrakis(2,4-dimethoxyphenyl)-*N*2,*N*2',*N*7,*N*7'-tetraphenyl-9,9'-spirobi[fluorene]-2,2',7,7'-tetraamine

CAS No. : 2102348-92-3

Grade : >99% (HPLC)

Formula :  $C_{81}H_{68}N_4O_8$

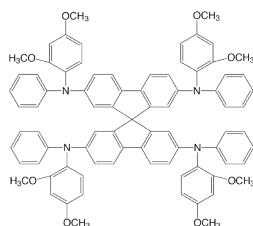
M.W. : 1225.43 g/mole

HOMO : -5.24 eV

LUMO : -2.08 eV

Reference : *Solar Energy Materials and Solar Cells* 176

(2018) 318-323



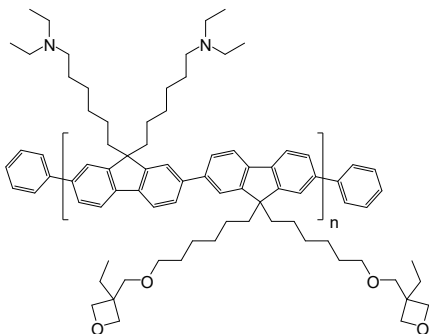
Lumtec

### LT-N177 | PFN-OX

6,6'-(9',9'-Bis(6-((3-ethyloxetan-3-yl)methoxy)hexyl)-7,7'-diphenyl-9H,9'H-2,2'-bifluorene-9,9'-diyl)bis(N,N-diethylhexan-1-amine)

CAS No. : 1345045-27-3  
 Grade :  $M_w > 20,000$  (GPC)  
 Formula :  $(C_{70}H_{102}N_2O_4)_n C_{12}H_{10}$   
 UV : 378 nm (in THF)

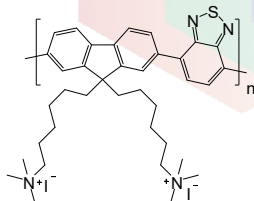
Reference : *J. Mater. Chem. C*, 2014,2, 3270-3277



### LT-N181 | PFNIBT

Poly(9,9-bis(6-trimethyl ammoniodide)-hexyl-fluorene-2,7-diyl-*alt*(benzo[2,1,3]thiadiazol-4,7-diyl))

Grade :  $M_w > 20,000$  (GPC)  
 Formula :  $(C_{37}H_{50}I_2N_4S)_n$   
 M.W. : 670.91 g/mole  
 Solubility : Soluble in  $CHCl_3$ , Chlorobenzene, Dichlorobenzene

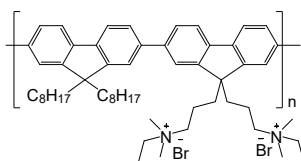


### LT-N878 | PFNBr

Poly[(9,9-bis(3'-((N,N-dimethyl)-N-ethylammonium)propyl)-2,7-fluorene)-*alt*-2,7-(9,9-dioctylfluorene)]

CAS No. : 889672-99-5  
 Grade :  $M_w > 10,000$  (GPC)  
 Formula :  $(C_{56}H_{80}N_2Br_2)_n$   
 UV : 375 nm (in MeOH)  
 PL : 440 nm (in MeOH)  
 Solubility : Soluble in MeOH

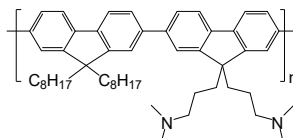
Reference : *Chem. Mater.*, 2004, 16, 708



### LT-N4027 | PFN-DOF

Poly[(9,9-bis(3'-((N,N-dimethylamino)propyl)-2,7-fluorene)-*alt*-2,7-(9,9-dioctylfluorene)]

CAS No. : 673474-75-4  
 Grade :  $M_w > 10,000$  (GPC)  
 Formula :  $(C_{52}H_{70}N_2)_n$   
 UV : 378 nm (in  $CH_2Cl_2$ )  
 PL : 414 nm (in  $CH_2Cl_2$ )  
 Solubility : Soluble in  $CH_2Cl_2$ ,  $CHCl_3$ , Toluene  
 Reference : *Chem. Mater.*, Vol. 16, No. 4, 2004

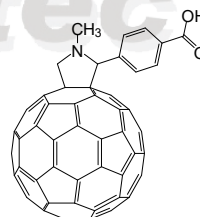


### LT-S9161 | C<sub>60</sub>-COOH-SAM

4-(1',5'-dihydro-1'-methyl-2'H-[5,6]fullereno-C<sub>60</sub>-1h-[1,9-c]pyrrol-2'-yl) benzoic acid

CAS No. : 631918-72-4  
 Grade : > 99%  
 Formula :  $C_{70}H_{11}NO_2$   
 M.W. : 897.84 g/mole  
 UV : 345 nm (in  $CH_2Cl_2$ )

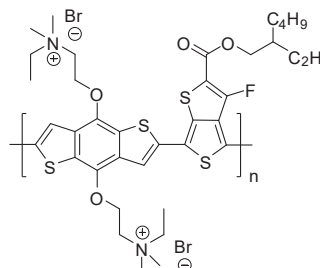
Reference : 1. *Journal of Physical Chemistry Letters* (2015), 6(12), 2399-2405  
 2. *ACS Nano* (2014), 8(12), 12701-12709



### LT-S9274 | PTB7-NBr

Poly{4,8-bis{[(N,N-dimethyl)-N-ethylammonium]propyloxy}benzo[1,2-b:4,5-b']dithiophene-2,6-diyl-*alt*-3-fluoro-2-[(2-ethylhexyl)carbonyl]thieno[3,4-b]thiophene-4,6-diyl}

CAS No. : 2092936-05-3  
 Grade :  $M_w > 10,000$  (GPC)  
 Formula :  $(C_{37}H_{51}Br_2FN_2O_4S_4)_n$   
 Reference : *Chem. Commun.*, 2017, 53, 2005-2008



### LT-S9289 | PNDIT-F3N-Br

Poly[[2,7-bis(2-ethylhexyl)-1,2,3,6,7,8-hexahydro-1,3,6,8-tetraoxobenzo[Imn] [3,8]phenanthroline-4,9-diy]-2,5-thiophenediy][9,9-bis[3' ((N,N-dimethyl)-N-ethylammonium)]propyl]-9H-fluorene-2,7-diy]-2,5-thiophenediy]

CAS No. : 2169941-79-9

Grade :  $M_w > 10,000$  (GPC)

Formula :  $C_{65}H_{80}Br_2N_4O_4S_2$

UV : 380, 580 nm (in Methanol)

Reference : *J. Mater. Chem. A*, 2017, 5, 19447–19455

